

Bellows Suction Cups SAB2 P (2.5 Folds)

Suction area (Ø) 20 mm



Suitability for industry specific applications



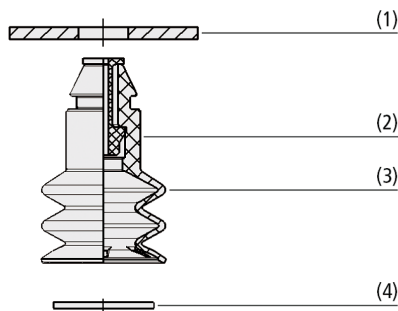
Bellows Suction Cups SAB2 P (2.5 Folds)

Application

- Round bellows suction cups with 2.5 folds for handling sheet metal parts such as in CNC metal and laser cutting machines
- Applications with requirements for high holding forces and resistance to lateral forces even on oily and contaminated workpiece surfaces
- Use in area gripping systems and "suction cup carpets"; optional integration of flow restrictor to reduce leakage occurring at partial occupancy

Design

- Round bellows suction cup SAB2 P (3) with 2.5 folds and radial ribs and sealing edge with sealing lip
- Machine side existing hole for tool-free assembly through push-in function (1)
- Optional integration of flow restrictor (2) to reduce leakage occurring at partial occupancy
- Optional integration of filter screen (4) as a pre-filter (120 µm filter pore size)



System design Bellows Suction Cups SAB2 P (2.5 Folds)



Bellows suction cups SAB2 P when handling sheet metal parts

Product highlights

- Fast, tool-free installation and removal through push-in function
- High suction force even under rough conditions (e.g. due to oil or chips) thanks to sealing lip with radial webs and sealing edge
- Wear-proof, ozone-resistant (NBR) and non-marking (HT1) suction cup

Bellows Suction Cups SAB2 P (2.5 Folds)

Suction area (Ø) 20 mm

Designation code Bellows Suction Cups SAB2 P (2.5 Folds)

SAB2	–	20	–	HT1-60	–	P
1		2		3		4

1 – Abbreviated designation

Code	Version
SAB2	2.5 folds

2 – Suction area

Code	Diameter in mm
20	ø 20

3 – Material

Code	Material
HT1-60	High temperature material
NBR-60	Nitrile caoutchuc

4 – Product addition

Code	Type
P	Push-in function

Suction cup SAB2 P is delivered as a ready to connect component. Available in materials HT1 and NBR.

Available accessories: filter disc (FD), flow restrictor (SW)

Ordering data Bellows Suction Cups SAB2 P (2.5 Folds)

Type	Part no.
SAB2 20 HT1-60 P	10.01.06.03235
SAB2 20 NBR-60 P	10.01.06.03263

Ordering data Accessories Bellows Suction Cups SAB2 P (2.5 Folds)

Type		Part no.
Flow resistance	SW 80 P 7.3	10.05.04.00090
Flow resistance	SW 100 P 7.3	10.05.04.00091
Flow resistance	SW 130 P 7.3	10.05.04.00092
Flow resistance	SW 150 P 7.3	10.05.04.00093
Filter disc	FD 16 120	10.01.06.02565

Technical data Bellows Suction Cups SAB2 P (2.5 Folds)

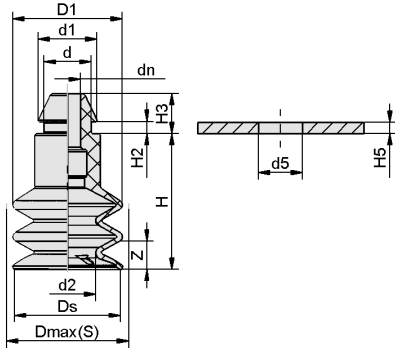
Type	Pull-off force [N]	Suction force (-600 mbar) [N]*	Volume [cm ³]	Workpiece radius min. (convex) [mm]
SAB2 20 HT1-60 P	13	4.7	2.600	20
SAB2 20 NBR-60 P	13	4.7	2.600	20

*The specified suction forces are theoretical values at a vacuum of -0.6 bar and with a smooth, dry workpiece surface - they do not include a safety factor

Bellows Suction Cups SAB2 P (2.5 Folds)

Suction area (\emptyset) 20 mm

Design data Bellows Suction Cups SAB2 P (2.5 Folds)



SAB2 P

Bellows Suction Cups SAB2 P (2.5 Folds)

Suction area (Ø) 20 mm

Design data Bellows Suction Cups SAB2 P (2.5 Folds)

Type*	d [mm]	d1 [mm]	d2 [mm]	d5 [mm]	D1 [mm]	Dmax(S) [mm]**	dn [mm]	Ds [mm]	H [mm]	H2 [mm]	H3 [mm]	H5 [mm]	Z (Stroke) [mm]
SAB2 20 HT1-60 P	8.5	10.6	10	7.9	19.7	20.5	4.7	19.1	24.5	2.2	7.2	2	9
SAB2 20 NBR-60 P	8.5	10.6	10	7.9	19.7	20.5	4.7	19.1	24.5	2.2	7.2	2	9

*Acceptable dimensional tolerances for rubber parts concerning to DIN ISO 3302-1 E3

**External dimension of the suction cup when it is pressed against the workpiece by the vacuum